

# FUTURE SHAPE



**SensFloor® Life**  
Service in your home

## Ambient Assisted Living



Modern forms of housing for seniors are appealing not only for the people who live there, but also for investors, project developers, and operators. They go by various names (assisted living, supported living, inclusive living, in-home care, etc.), but they all have one thing in common: they promise the residents a living environment which supports them in an age-appropriate way and thus enables them to continue living independently.

In order for this environment to be able to adapt flexibly to the residents and their needs, intelligent technology is required. SensFloor, a typical AAL system, offers you this key component for your modern senior living.

### **SensFloor, an assistance system for people with:**

- Alzheimer's disease/dementia
- Parkinson's disease
- Epilepsy
- Stroke
- Osteoporosis
- Various disabilities

# The room becomes intelligent



Security 24/7



Alarm function in emergencies



Support for specific situations



Functions are scalable – the amount of support varies, depending on need



Detect changes in health early on



Discreet – the sensors are invisible



Secure data management



Respects the privacy of residents and caregivers



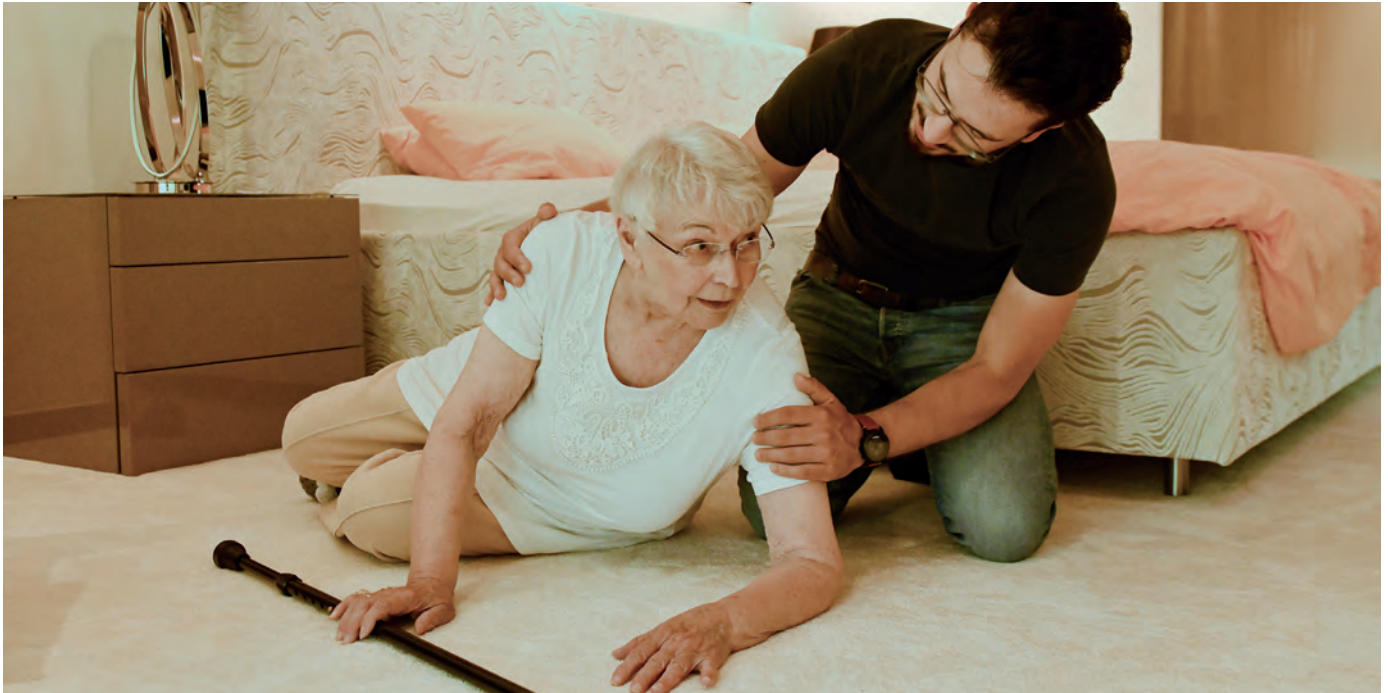
Can be integrated with other smart home systems



Intelligent assistance functions thanks to artificial intelligence

**Make independent living possible –  
in spite of a need for support**

## The home calls for help in an emergency

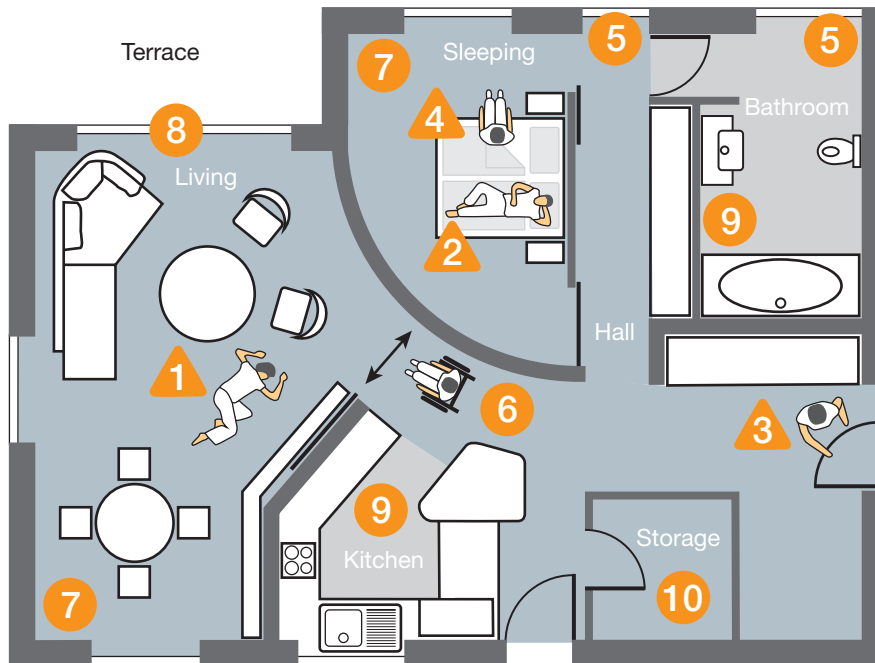


Anyone who wants to enable people with disabilities to live independently and free of restrictions needs an emergency plan: How can safety be ensured around the clock without the need for a caregiver on site? Who calls for help in an emergency if the resident him- or herself is unable to do so?

SensFloor is discreet and vigilant at all times. It does not need to be worn on the body and there is no button to be pushed. Thanks to artificial intelligence, the system detects when someone is in danger and calls for help automatically.

- For a sound senior living investment, a modern assistance system is a critical key to success!

# Everyday support



## Possible alarms:

- 1 Falls
- 2 Long period of inactivity
- 3 Leaving the residence
- 4 Fall risk

## Smart home functions:

- 5 Lighting control
- 6 Automatic door operation
- 7 Air conditioning & ventilation
- 8 Burglar alarm
- 9 Leak detection
- 10 Remote maintenance

The alarms and messages desired can be adjusted individually for each residence. Other notifications can be added as needed – they can be activated simply and at any time.

In addition, smart home functionalities which make everyday life significantly easier in particular for people needing assistance can be initiated via SensFloor. As soon as the resident enters a defined area, lights are automatically switched on, doors are opened, or, for example, the ventilation is controlled.





## Ensure optimal support



### Smartphone for alarms:

- Push notifications
- Confirmation required
- Additional info via app
- Access to the entire system via VPN



### PC/tablet for concierge service:

- Visual and acoustic alarms
- Clearly arranged dashboard showing all managed residences
- Activities can be individually accessed in each residence
- Documentation of falls/alarms
- Comprehensive analyses

Every modern form of housing has organised its support services differently. With SensFloor, you can guarantee security no matter how the services of the residential community are organised. Alarms, notifications and evaluations can be received very flexibly via smartphones, tablets, or a PC. The assistance system can be fully adapted to the operator's circumstances. Operation is simple and intuitive – a modern system which impresses not only the residents but also the staff.

## A sensor system you don't see



Always there, and yet not visible. This is because the sensors are hidden under the flooring. There are no visible components which could disrupt a sense of well-being or be unnerving to the resident: no camera-like installations, no device which must be worn on the body. The ultraflat sensors of the SensFloor system measure movements on the floor and from these they calculate where the resident is. The intelligent SensFloor software detects whether and where help is needed and reacts appropriately and immediately. Fully automatic, 24/7, in all areas of the residence.

SensFloor offers a large selection of interfaces. Integration with other systems is thus possible and easy to implement.

- Robust and durable
- Flexible with regard to room size and flooring
- Invisible and discreet – respects privacy
- Update and upgrade service
- Connection to call systems and emergency call services; CE, FCC and ISO 9001 certified; compliant with RoHS, RED and REACH



## SensFloor Life in everyday use



The newly constructed Weismain senior living facility was inaugurated in the summer of 2019. Assisted living which in terms of comfort resembles a hotel.

The managing director Maria Simmler has achieved true Ambient Assisted Living in her facility. This has been so successful that her residents actually want to remain in the apartments over the long term. This is because, if the need for support increases, the apartment and support services simply adapt flexibly to the seniors' needs.

In all 38 apartments, SensFloor is an inherent component of the modern support concept.

- All apartments are equipped with SensFloor
- Ambient Assisted Living
- The residents can also continue living in the apartments even if they have increasing needs for assistance – the apartment and the degree of care flexibly adapt to the circumstances.



## Assisted living at the Fischer care home



For Ms. Simmler, the advantages of a sensor-based assistance system were evident. The lighting and some of the electronic devices are controlled depending on whether a person is present. To help avoid falls, SensFloor reports wet spots and switches on orientation lights when getting up at night. If a resident falls despite all of the precautionary measures, SensFloor alerts the staff and thus guarantees rapid assistance. Assisted living that does what it promises throughout retirement.

Incidentally, Ms. Simmler has no need of an advertising budget, because word of the modern apartments that are suitable for senior citizens spread quickly and the waiting list is long, without any marketing activities whatsoever.



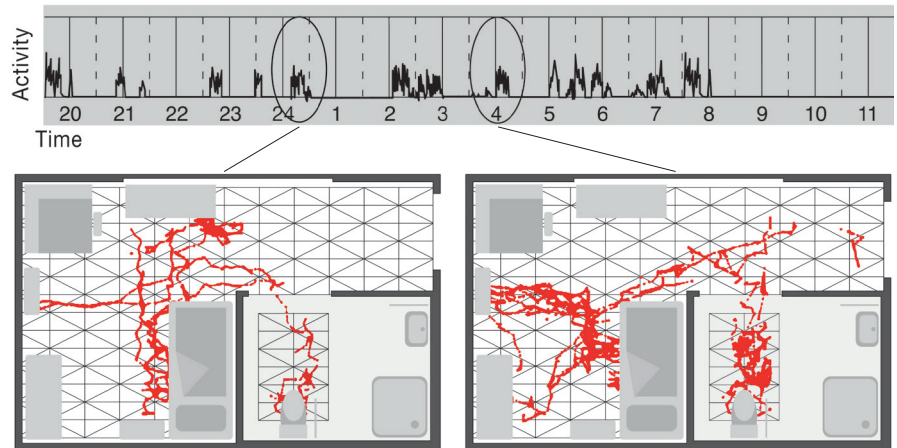
"Everyone wants to feel secure at home, in their own four walls. They also want to maintain their dignity and therefore their independence when they grow old. Even if they may need support at some point. Finding SensFloor was an absolute stroke of luck for me: it's precisely the kind of technology I was looking for: security that you can't see. Sensors that are hidden in the floor without the residents feeling that they're under surveillance or having to wear them."

Maria Simmler, Managing Director, Pflege Fischer GmbH

## Conclusions regarding the state of health



### Insight into the sleep cycle



*Insight into the sleep cycle of the previous night:*

*A very restless night, getting up and going to the bathroom multiple times.*

As desired, the movement data recorded via SensFloor not only enable safety and support on a daily basis but they also provide insight into the state of health. The activity data are of particular interest when they are looked at over a longer period. Is the resident moving less and/or more slowly? Has the sleep behaviour changed? These are all indicators of a worsening in the state of health which can be addressed early on, thanks to SensFloor. It is a helpful source in particular for people with dementia, in order to learn more about their well-being.

These activity data can be viewed and released to doctors or family members, as needed.

- Evaluate activity level
- Walking speed as a health parameter
- Analyse sleep behaviour
- Optimise medication dosages
- Falls can be played back for analysis

## What we stand for



Well-founded knowledge of sensor technology, combined with innovative capability and the courage to not just think of visions but also to implement them – this is what Future-Shape stands for. With our SensFloor, we want to contribute to a better tomorrow, for the well-being of our aging community.

We take responsibility. We put the results from current research into certified series production and thus offer a perspective for safe and independent senior living.

We stand for confidential handling of data, sustainable actions, fairness in interactions with our employees and customers, and a supply chain which shares our values.

- Over 15 years' experience
- Winner of numerous innovation awards
- Made in Germany
- CE, FCC and ISO 9001 certified

## More information?

We are pleased to advise you on your individual project



Reading the information is one thing – testing the system “live” is something else entirely!

Please feel free to contact us!

We look forward to welcoming you on our premises and discussing with you about your individual requirements and wishes.

Future-Shape GmbH  
Altlaufstraße 34  
85635 Höhenkirchen-Siegertsbrunn Germany

Phone: +49 8102 89638 10  
Mail: [sales@future-shape.com](mailto:sales@future-shape.com)  
Web: [www.future-shape.com](http://www.future-shape.com)